

---

# Housing Partnership Network



**Social** Mission.  
Private **Enterprise.**

---

# The Network

- ▲ Alliance of 87 high performing nonprofits
- ▲ 600,000 affordable homes created
- ▲ 2 million low-income families served
- ▲ Foster innovation & entrepreneurship
- ▲ Create & operate social enterprises for wholesale access to capital markets



Peer Exchange – Network meeting

---

# The Members

- Regional and state-wide focus
- Strong private and civic leadership
- Achieve scale and local accountability
- Combine social mission & business savvy
- NYC Housing Partnership, Phipps, CPC, Settlement Housing & Common Ground



AHC After School Program - VA

---

# The Companies

## Housing Partnership Fund

\$30M fund financed 11,000 homes

## Housing Partnership Ventures

\$14M equity in four companies

## Housing Partnership Insurance

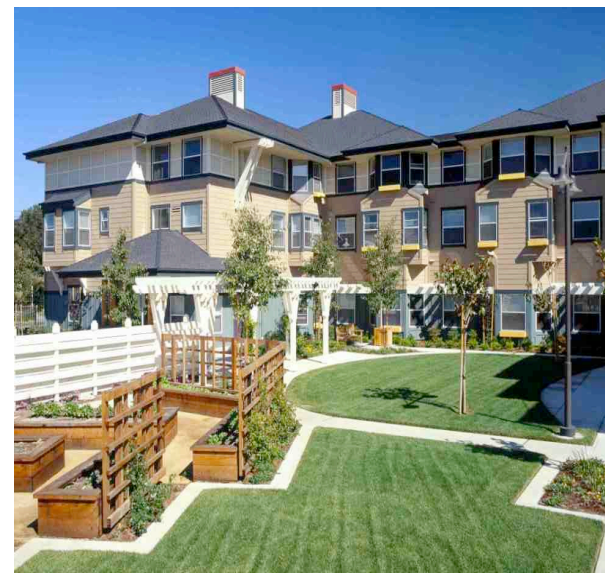
\$3B of property and liability coverage

## Housing Partnership Securities

\$100M of tax exempt bonds for 2000 apartments

## Gulf Coast Housing Partnership

\$20M company to develop 10,000 homes

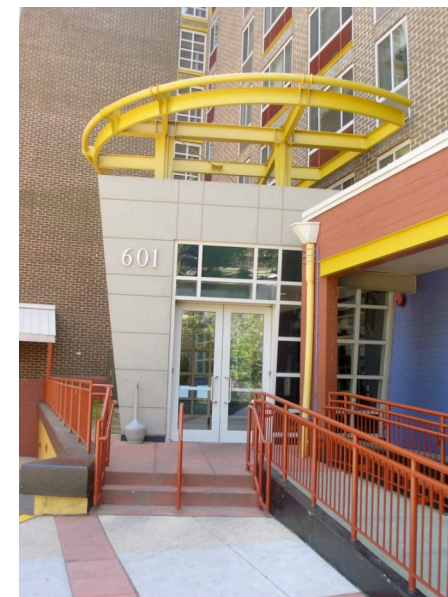


Eden Housing – California

---

# Housing Partnership Insurance

- Captive insurer owned by 18 nonprofits
- Property & liability coverage for 37,000 units
- Pool and underwrite a preferred risk group
- Improved pricing, terms and stability
- \$1M premium savings & 1.4M profit in 2005



CPDC – Washington, DC

---

# Housing Partnership Securities

- Funds, pools & securitizes tax exempt bonds
- \$100M and 2000 apartments financed annually
- Better pricing, proceeds and execution
- LLC owned by producers, Network & investors
- Operating partnerships overseen by Network



ACTION Housing - Pittsburgh

# Partners and Awards

